

APR 20, 2025

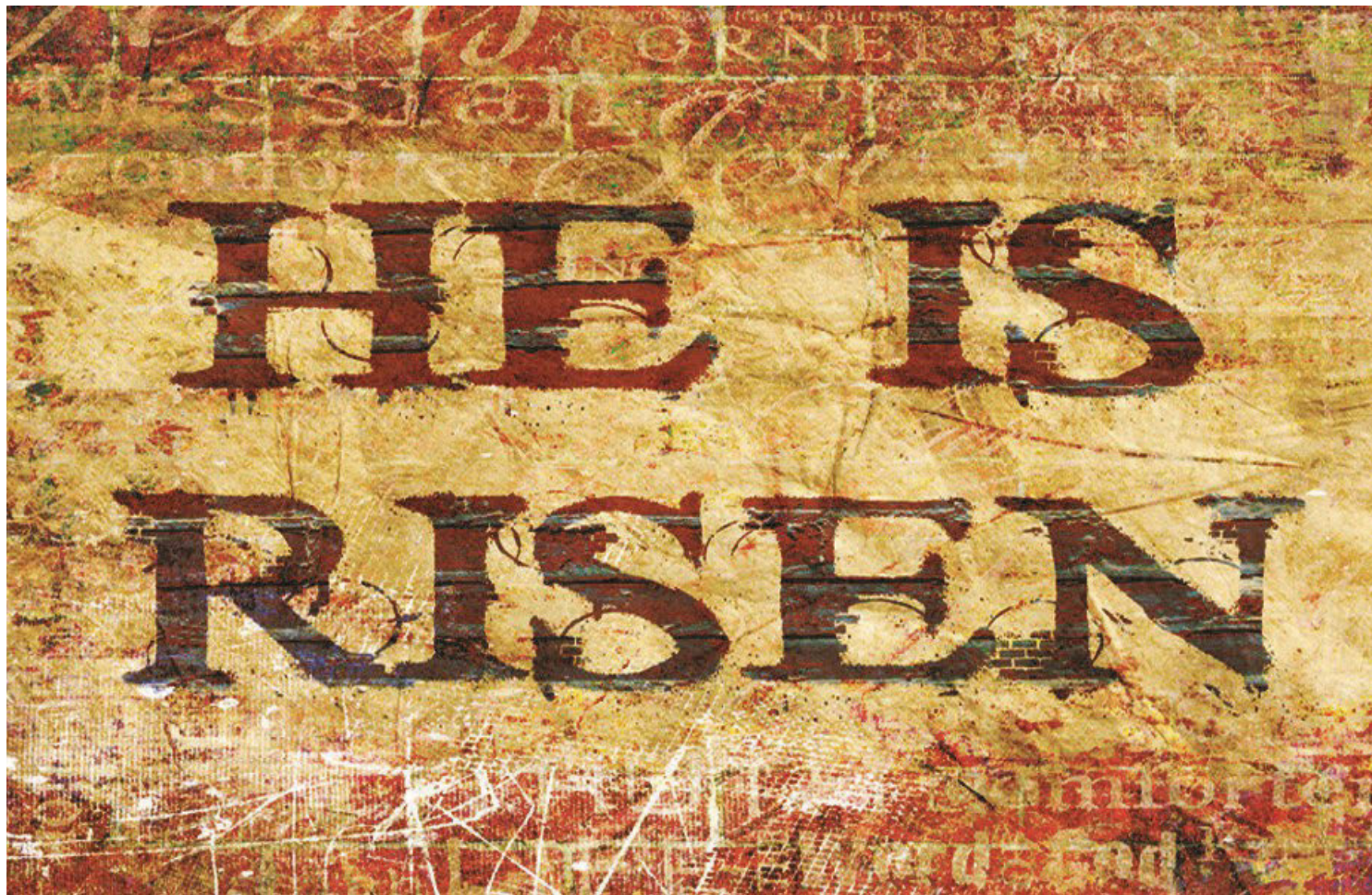
Easter Sunday



Our Lady of Lourdes

Catholic Church

... a pilgrim church
coming to know
the kingdom of God
by being Christ
to the world.



3722 S. 58th Street | Milwaukee, WI 53220-2053 | (414) 545-4316

EUCCHARIST:

SAT 4:00 PM

SUN 8:00 AM | 10:30 AM

WED 9:30 AM

PARISH DIRECTOR

DEB STEPPE

Office: (414) 545-4316 x 113

CONNECT:

WEBSITE ololmke.org

EMAIL office@ololmke.org

FACEBOOK /ololmke

INSTAGRAM /ololmke

YOUTUBE @ololmke

JOIN THE PARISH: ololmke.org/become-a-member



FINANCIAL STEWARDSHIP UPDATE

Parish Support - March 2025

	ACTUAL <u>As of 3/31/25</u>	BUDGETED <u>for March</u>
Reg. Envelopes.....	\$ 71,283.58	\$65,416.67
Offertory	\$3,925.37	\$3,333.37

Budget Updates Fiscal Year: March 2025

	ACTUAL	BUDGETED
Operating Income	\$783,546.43	\$717,724.98
Operating Expense	\$673,389.64	\$689,429.46

Improvement Fund Updates

Beg. Balance 7/1/24...	\$169,666.89
Donations	\$250,906.52
Expenses	\$140,951.91
Balance (3/31/25)	\$279,621.50

THANK YOU!

*Our Lady of Lourdes is greatly
blessed with your continued
generous support
of all our ministries!*

To our visitors:

Thank you for praying with us! If you would like to make an online donation to OLOL, please use the QR code or url address to access our online giving provider, WeShare. Thank you for your support, and know that you are always welcome here.



tinyurl.com/ololmkedonate

NOTES FROM DEB

Happy Easter!

Thank you for being a part of our Easter celebration. Whether you are a visitor, a new member, or a long-time member of the parish family, I am grateful you are here. Our prayer is richer and more joyful with your presence with us. Please know that you are always welcome here at Our Lady of Lourdes.

On this sacred day, I am so very aware of the blessings of this parish community. The generosity, faithfulness, and joy of our parishioners touches me deeply. The love you share with those who come through our door—no matter who they are, no matter what they look like, is a beautiful sign of God's Presence. Thank you for the support you continue to give to me and to our every endeavor of parish ministry. It is a privilege to pray with you and it is the greatest honor of my life to be the parish director here.

In this season of new life and resurrection, please know of my prayers for each of you. Let us all continue to build God's kin-dom in beautiful and wonderful ways.

Your shepherd,
Deb Steppe



VIRTUE OF THE WEEK

Perceptiveness

Perceptiveness is clarity of insight. It is being observant of what is beneath the surface and looking for deeper meaning. When we are perceptive, our understanding is intuitive and discerning. We slow down into awareness. We strive to see what is truly going on. We are thoughtful and considerate. We offer others the gift of feeling heard and understood.

As the Gospel is read today can you let the light of understanding shine on you?

What can you see more clearly about Jesus today?

How did your Lenten journey help you celebrate today more fully with hope?

SUN 20

8:00 am Liturgy (Jurkus)	Church
10:30 am Liturgy (Burkert)	Church
10:30 am Children's Easter Service	Rm 9

MON 21

Facility Closed

TUE 22

1:00 pm Art Guild Mtg.	Rm 4
2:00 pm Blood Drive	Hall
3:00 pm Food Pantry	Rm 7
6:00 pm Finance Council Mtg.	Rm 9
6:30 pm The Art of Listening	Rm 10

COMMUNITY LIFE

In Memoriam

In loving memory of
Marion Holtz

From
Family

In loving memory of
Rhoda Skalecki

From
Sally & Charles Litka

In loving memory of
Elaine McKean

From
Peter & Mary McKean
Beth Jones
Craig & Mary Mueller
Wayne & Mary King

In loving memory of
Don Brockman

From
Mary Crisp

THIS IS THE DAY THE
LORD HAS MADE!



PSALM 118

FORMATION

RSVP for GIFT Spring Service Day on Saturday, April 26
Please RSVP and Register for the GIFT Spring Service Event by Sunday, April 20.

GIFT is teaming up with the Social Justice Committee for this session which takes place from 9:00 am–12:00 pm on Saturday, April 26. We will be gathering at Jackson Park to help in the Milwaukee Riverkeeper Spring Clean Up for the service event, so please dress appropriately for the weather. We will end with a pizza lunch from 11:30 am-12:00 pm in the Parish Hall.

Register at <https://tinyurl.com/ololriver>



GIFT May 4—Prayerpalooza please RSVP by Sunday, April 20

This session is on our traditional GIFT day, but takes place from 9:00 am-12:00 pm. It is also our third OLOL Community Event of the year! The entire parish is invited to participate in our final GIFT session of the year. We will open with **Mass at 9:00 am** (replacing both the 8:00 am and 10:30 am Masses that day) followed by brunch. Then we will move into our GIFT programming for the day—Prayerpalooza! Everyone will have the opportunity to attend three different workshops on prayer. An RVSP is required in order to join us for brunch and participate in Prayerpalooza. Register at

<https://tinyurl.com/prayerpalooza>



WED 23

6:30 pm Baptism Prep Rm 10

THU 24

12:00 pm Women's Grief Support Group Hall C

FRI 25

Office Closed

6:00 pm Baptism Rehearsal Church

WORSHIP

Christ has turned all our sunsets into dawn.

As we celebrate the Easter season this year, we are especially aware of the state of our country and our world—both so much in need of our prayers and actions. Throughout Lent we emphasized the need for **hope** in our lives and our world. The following is a poem by Janet Morley, included in a collection of inspirational words and images called, *Imaging the Word, an Arts and Lectionary Resource, Volume 3*, which seems to express a way to celebrate the hope that is Christ's resurrection.



When we are all despairing
when the world is full of grief
when we see no way ahead
and hope has gone away:

Roll back the stone.

Although we fear change
although we are not ready
although we'd rather weep
and run away:

Roll back the stone.

Because we're coming with the women
because we hope where hope is in vain
because you call us from the grave
and show the way:

Roll back the stone.

Scripture Readings for April 26/27

2nd Sunday of Easter (Sunday of Divine Mercy)

Acts 5:12-16 | Psalm 118 | Revelation 1:9-11a, 12-13, 17-19 |
John 20:19-31

OUTREACH

Blood Drive

Tuesday, April 22
2:00-6:00 pm

Sign-up for our next Blood Drive after all Masses. Sign-up online at ololmke.org/blood-drives. All donors will receive a coupon for a pint of custard from Culver's. Thank you in advance for your lifesaving donation.

Upcoming Food Pantry Dates: April 22, May 6 and 20

Most needed items: jelly, boxed potatoes, Hamburger Helper, and spaghetti sauce. Thanks for your ongoing support to the pantry. It is because of you that we can provide food to the needy. God bless.

Please watch expiration dates.
ololmke.org/food-pantry

Three Ways to Care for the Earth

1. Get educated on how the Church expects us to care for creation. How? Start by reading the Laudato Si' encyclical by Pope Francis.

2. Commit to creating less "convenient" waste. For example:

- Use refillable water bottles or coffee tumblers instead of one-time use items.
- Try out reusable beeswax wrap to preserve food instead of plastic wrap.

3. Donate some time to a local creation-care organization. Consider volunteering for a:

- local park/beach cleanup
- neighborhood recycling event
- local community garden



SAT 26

9:00 am GIFT Service Session Off Site
9:30 am Rhoda Skalecki
Funeral Visitation Church
11:00 am Rhoda Skalecki
Funeral Church
4:00 pm Liturgy (Cooper) Church

SUN 27

8:00 am Liturgy (Suriano) Church
10:30 am Liturgy (Burkert) Church

SPOTLIGHT

Unsung Disciples: Art Guild

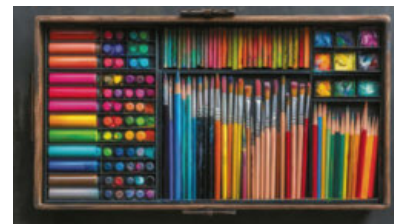
Since its inception in 2011, the Art Guild at Our Lady of Lourdes has played a pivotal role in enriching the parish community through artistic expression and spiritual exploration. Founded by Mary Ann Logic, the guild has become a vibrant hub for individuals seeking to intertwine their faith journey with various art forms.

Monthly gatherings are a cornerstone of the guild's activities, offering members a space to explore various art mediums, including painting, creative writing, and card making. These meetings are designed to be inclusive, welcoming novices and experienced artists alike to discover and nurture their creative selves within a supportive community.

One of the hallmark initiatives of the Art Guild is the annual Hallway Art Gallery Exhibition. This event transforms the parish hallways into a captivating gallery, showcasing the diverse talents of parishioners and fostering a deeper appreciation for the arts within the community. Complementing this exhibition is the Community Art Mosaic project, launched in 2015-16, which invites collaborative participation to create collective artworks that symbolize unity and shared faith.

The Guild's commitment to integrating art into spiritual practice is further exemplified by its affiliation with the Discipleship Institute. This collaboration underscores the Guild's mission to assist members in their spiritual journey through artistic endeavors.

The Art Guild stands as a testament to the transformative power of art in fostering community, spirituality, and personal growth. Its diverse initiatives continue to inspire and unite parishioners, reflecting the profound connection between creativity and faith.



Jim Stamatakos-
Pastoral Council

DISCIPLESHIP

The Art of Listening – A Listening Workshop

Tuesday, April 22

6:30 pm–8:30 pm

Room 10

Facilitated by: Jean Groshek – Alverno College

Do you feel like nobody listens anymore?

Listening is an art that requires practice, skill, spirit, and inspiration. Listening builds trust and understanding. Join us for this opportunity to improve or sharpen your listening skills as a disciple of Christ. The evening will feature exercises to strengthen listening skills with ample time for discussion and reflection.

Activating the Body of Christ

Tuesdays – April 29, May 6, and 13

6:30 pm–8:30 pm

Online on Zoom

Facilitated by: Anita Hallman-Kowalski

Activating the Body of Christ invites us to look at “how” we can make a difference. Through panel and individual presentations, we will discuss how to respond to social justice issues; respectful dissenting; and what am I willing to do. Conversation and questions are a must!

Registration is necessary for either event and can be done on the Discipleship Institute web page at ololmke.org/discipleship-institute/ or call the Parish Office.

STAFF EMAIL

Patricia Fabian (Administration)
fabianp@ololmke.org

Bill Goulding (Deacon)
gouldingb@ololmke.org

Paul Kuenzi (Maintenance)
kuenzip@ololmke.org

Ken Marshman (Maintenance)
marshmank@ololmke.org

Julie Petri (Admin. Asst.)
petrij@ololmke.org

Marc Puechner (Communications)
puechnerm@ololmke.org

Cindi Roark (Finance)
roarkc@ololmke.org

Maggie Russell (Formation Ministry)
russellm@ololmke.org

Nancy Short (Liturgy Asst.)
shortn@ololmke.org

Deb Steppe (Parish Director)
stepped@ololmke.org

Steve Szymanski (Child Ministry)
szymanskis@ololmke.org

Anne Van Deusen (Music Ministry)
vandeusena@ololmke.org

YOUR ONE STOP AUTO REPAIR SHOP
DAVE'S GARAGE
 Transmissions
 Tune-Up
 Brakes • A/C
 Alignment • Engines-Repair/Rebuild
 Brakes & Computer Diagnostics
 Maintenance Service
 5454 W. Forest Home Ave.
 321-5450

Kathy's Shade Shop LLC
 Full line of Custom Window Treatments
 Professional Installation & Repairs
 9034 W. National Ave • West Allis, WI 53227
 414-321-1850 • www.kathysshadeshop.com

BAYCHAR AUTO SERVICE
 Auto and Light Truck Repair
 Trustworthy since 1954
 414-543-4111 • baycharauto.com
 6733 W. Oklahoma Ave, Milwaukee

RAY'S BUTCHER SHOPPE
 SUNDAY SPECIAL
 6 ROLLS FREE WITH THE PURCHASE OF 1 # HOT HAM
 4640 W. Loomis Rd., Greenfield 423-1322

Schaff Funeral Home
 Family Owned & Operated
 5920 W. Lincoln Ave.
 414-541-7533
 www.schafffuneralhome.com

HENRY P. FONS

Attorney At Law

Estate Planning
 Wills • Probate • Trusts
 Real Estate • General Practice
 Personal Injury

7115 W. Forest Home Ave.
 414-327-2323

ADT-Monitored Home Security
 Get 24-Hour Protection From a Name You Can Trust

- Burglary
- Flood Detection
- Fire Safety
- Carbon Monoxide

ADT Authorized Provider SafeStreets 833-287-3502

WE APPRECIATE OUR ADVERTISERS!

ANCHOR PRINTING, INC.
 For ALL Your PRINTING NEEDS!
 Mon. - Fri. 9-5
 Sat. Eves. By Appt.
 (414) 321-9421 **15% OFF Your First Order**
 6211 W. Forest Home Ave. • Milwaukee, WI 53220

BRUSKIEWITZ FUNERAL HOME
 Bruskiewitz Family Owned and Operated
 Dan Bruskiewitz, Director
 5355 W. Forest Home Ave.
 414-321-1700 ForestHomeFunerals.com

SUPPORT OUR PARISH

FREE AD DESIGN
 with purchase of this space
 CALL 800-950-9952

TROUBLE HEARING? LET US HELP!

Free Hearing Test by a Licensed Hearing Specialist
 Call Now - 414-533-0036 or visit bswhearing.com
 B.S. Wisniewski Hearing Centers, 60th & Coldspring
 Parishioner Discounts • Catholic owned • Call Today
 Jordan Wisniewski HIS



Discount LIQUOR INC.
 Beer - Soda - Wine - Liquor
 Daily 9 - 9 • Sunday 10 - 2
 5031 W. Oklahoma 545-2175
 WWW.DISCOUNTLIQUORINC.COM

SUPPORT OUR PARISH

SUPPORT OUR ADVERTISERS!

MAX A. SASS & SONS
 FUNERAL AND CREMATION SERVICE
 Pre-Need Lunch & Learn
 Seminars Held Monthly
 Call 414-649-1739 for more info
 www.maxsass.com

Genewagner
PLUMBING CO., INC.
 A COMPANY YOU CAN TRUST
 414-541-9217
 www.genewagnerplumbing.com

Compliments of
Zaganczyk Family
 Parish Members Since 1964

THREE CORNERS DENTAL
 4410 W. Oklahoma Ave.
 Milwaukee, WI 53219
 414-545-0770
 Accepting New Patients

Tower Chicken Farm, Inc.
 Fresh Turkeys, Chickens, Duck, Geese
 • Kielbasa Polish Sausage
 • Great Variety of Chicken Sausages
 Summer Sausage • Beef Sticks
 Chicken Burgers • Pierogi
 4111 S. 6th St. • 744-7151

AM Accounting and Tax Services LLC
ALICE ZAGANCZYK
 CERTIFIED PUBLIC ACCOUNTANT
 INDIVIDUAL AND BUSINESS
 TAX RETURN PREPARATION
 Starting at \$100
 1123 N Water St. Ste 300 Milwaukee, WI 53202
 414-231-9138
 www.amaccountingonline.com

DOES YOUR NONPROFIT ORGANIZATION NEED A NEWSLETTER?
 Engaging, ad-supported print and digital newsletters to reach your community.
 Visit lpicomunities.com

OUR COMMUNITY NEWSLETTER
 OUTREACH EDITION

Scan to contact us!

ALLIS
 AUTOMOTIVE CENTER
 6205 W. Lincoln Ave | West Allis, WI 53219
 414-541-3648
 Count on our over 30 years of repair experience

NEVER MISS OUR BULLETIN!

SUBSCRIBE

Have our bulletin emailed to you every week.

Visit www.parishesonline.com

SUPPORT OUR ADVERTISERS!

SUPPORT OUR ADVERTISERS!

SHORT STAFFED?
 Place an ad here to find new local talent for your business.
 CALL 800-950-9952

catholicmatch® Wisconsin

CatholicMatch.com/WI

LET'S GROW YOUR BUSINESS
 Place Your Ad Here and Support Our Parish!

CONTACT ME Timothy Brinckerhoff

tbrinckerhoff@4LPi.com or
 (800) 477-4574 x6424

