



Message:

Hello. My name is _____ and I am a member of the parish Finance Council.

It is again time for our periodic update, to keep you informed of the parish's financial situation.

>>> Operating Budget <<<

(supporting liturgies, ministries, programs, building, & staff)
(Last Fiscal Year – Jul'22-Jun'23)

| | Budget | Actual | + / - |
|----------------------|-----------|------------------|------------------|
| Income | \$841,105 | \$908,608 | +\$67,500 |
| Expenses | \$840,592 | \$894,358 | ** |
| Net | \$513 | \$14,270 | |
| Contributions | \$775,000 | \$820,985 | +\$46,000 |

THANK YOU for your generous support!!!

Message:

Since this is our first presentation of the new fiscal year, we'll first look back at the final Operating Budget figures for the previous fiscal year that ended June 30th. You may have seen these in the previously published Annual Summary, but today you get our commentary.

Recall that it's through our Operating Budget that we provide vital liturgies, pastoral care, innovative education programs, caring outreach ministries, the up-keep of our buildings, and a livelihood for our staff.

For last fiscal year, you gave ~\$821,000 in contributions. This was ~\$46,000 ahead of budget. Your contributions plus other sources of income led to a Total Income of ~\$908,000. This was ~\$67,500 ahead of budget.

Total Expenses for the year were \$894,000. **This total exceeded budget but was due to us recognizing the surplus as the year was ending, and then deciding to fund a) staff bonuses to somewhat compensate for no salary increases in that year, and b) some needed office & technology expenditures that we couldn't afford in this current year's budget. Items like a new copier & laptop replacements.

Bottomline, the year ended with a ~\$14,000 surplus. Thank you to all who provided generous support!

>>> **Operating Budget – Contributions** <<<
 (supporting liturgies, ministries, programs, building, & staff)
(Current Fiscal Year)

| | Full-Year Budget (Jul'23-Jun'24) | YTD Budget (Jul'23-Sep'23) | YTD Actual (Jul'23-Sep'23) |
|---|--|--------------------------------------|--------------------------------------|
| Contributions | \$810,000 | \$196,300 | \$179,893 |
| Difference (YTD Budget – YTD Actual) | | | -\$16,407 |

*Includes weekly/monthly offerings, weekly offertory and holy day offerings

THANK YOU for your continued generous support!!!

Message:

For our Operating Fund for the current fiscal year, through September, you've given ~\$180,000 in contributions.

This is ~\$16,000 less than YTD budget. It's early, so we'll monitor & encourage rather than panic at this time.

Thanks again to all who are providing continued generous support!

>>> Operating Budget <<<
 (supporting liturgies, ministries, programs, building, & staff)
 (Current Fiscal Year)

| | Full-Year Budget (Jul'23-Jun'24) | YTD Budget (Jul'23-Sep'23) | YTD Actual (Jul'23-Sep'23) |
|-----------------|--|--------------------------------------|--------------------------------------|
| Income* | \$888,200 | \$209,300 | \$196,275 |
| Expenses | \$888,143 | \$213,640 | \$192,015 |
| Net | \$57 | -\$4,340 | \$4,260 |

*Includes contributions, fees, fundraising revenue and misc. donations

Message:

The overall Operating Fund budget for this full fiscal year was planned to be a balanced budget, but with us forecasted to be about \$4000 in the red at this time year-to-date, based on historical trends.

After 3 months, our income is ahead of our expenses by ~\$4000.

Our income is ~\$13,000 behind budget. Fortunately, our expenses are ~\$21,000 below budget, primarily from lower office & maintenance expenses incurred so far and from not paying the salary of a Liturgical Director, as the search for Deb's replacement continues.

Financial Questions from OLOL's Ministry Fair

1) Understanding the weekly bulletin Financial Stewardship Update?

| FINANCIAL STEWARDSHIP UPDATE | | |
|---|------------------------|-----------------|
| Parish Support - October 2023 | | |
| | ACTUAL | BUDGETED |
| | <i>as of 10/6/2023</i> | <i>for Oct.</i> |
| Reg. Envelopes..... | \$16,947.94 | \$64,000.00 |
| Offertory | \$675.05 | \$3,000.00 |
| Budget Updates Fiscal Year: October 2023 | | |
| | ACTUAL | BUDGETED |
| Op. Income | \$214,963.89 | \$311,081.68 |
| Op. Expenses | \$209,792.83 | \$301,804.79 |

2) Virtual Mass impact on Stewardship giving?

Message:

Next, we thank all who visited our Finance Council table during the Aug 27th parish Ministry Fair. We want to share answers to 2 questions posed to us, thinking if one person asked, more of you may be interested.

1st, someone asked for help understanding the weekly bulletins' Financial Stewardship Update. So here are a few points:

- a) "Reg Envelopes" refers to identified giving, like via WeShare or ACH or check or labeled envelope. "Offertory" refers to anonymous giving, like cash in the collection basket.
- b) "Actual" refers to contributions or income received or expenses incurred for the month or year to-date. "Budgeted" refers to what was planned for that full month or the fiscal year thru that full month. Budgeted amounts differ month-to-month based on knowledge or past trends.

2nd, someone asked if Virtual Mass attendance has impacted Stewardship giving?

- a) While we have data on the number of unique & repeat virtual attendees, we don't specifically track virtual attendance against giving.
- b) Many parishioners give monthly or at frequencies other than weekly. Many parishioners give electronically via ACH or WeShare. Attending mass virtually doesn't preclude someone from giving.
- c) Just as we don't assume that those of us here at mass who pass on the Offertory basket are not giving, we think likewise for virtual mass attendees.



Love One Another Capital Campaign

In support of future ministries of OLOL & the Archdiocese

| Goal | Pledged | Received | Spent | OLOL Prioritized Needs |
|-----------|-----------|-----------|----------|-------------------------|
| \$150,000 | \$150,000 | \$150,000 | \$50,918 | 1) Mission & Ministry |
| \$490,940 | \$333,051 | \$3,094 | | 2) Capital Improvements |
| \$640,940 | \$483,051 | \$153,094 | \$50,918 | TOTAL OLOL Portion |

Message:

Next, a quick Love One Another Capital Campaign update...

Recall that as you fulfill your pledges, the Archdiocese directs 40% of funds received to Archdiocesan community needs, and 60% back to OLOL. These figures pertain to our 60% share.

To-date, we have received the first three quarterly installments for a total \$153,000, and we've spent ~\$51,000 on our Mission & Missionary projects, specifically on the upgraded sound board and projectors in church.

Coming next is the purchase of the mobile coffee cart for use at miscellaneous events and the purchase & installation of window shades for east-side classrooms.

We'll continue to keep you updated, as more funds are received and as prioritized project efforts progress. Thanks again to all participating in this Campaign.



intertwining artisans, music, food, community & fun

October 13-15, 2023

Thanks to all who organized, worked, & attended!

Message:

Next, we want to recognize the successful Oktoberfest parish & community event held last weekend. It was a great time and a great display of OLOL hospitality.

Big thanks to all who led & organized & worked & attended!!!

2024 Annual OLOL Stewardship Pledging



Supports OLOL's ongoing operation

*Please prayerfully consider
your ability to give!*

Nov 7 – Mailings
Nov 18/19 – Pledge Commitment Weekend

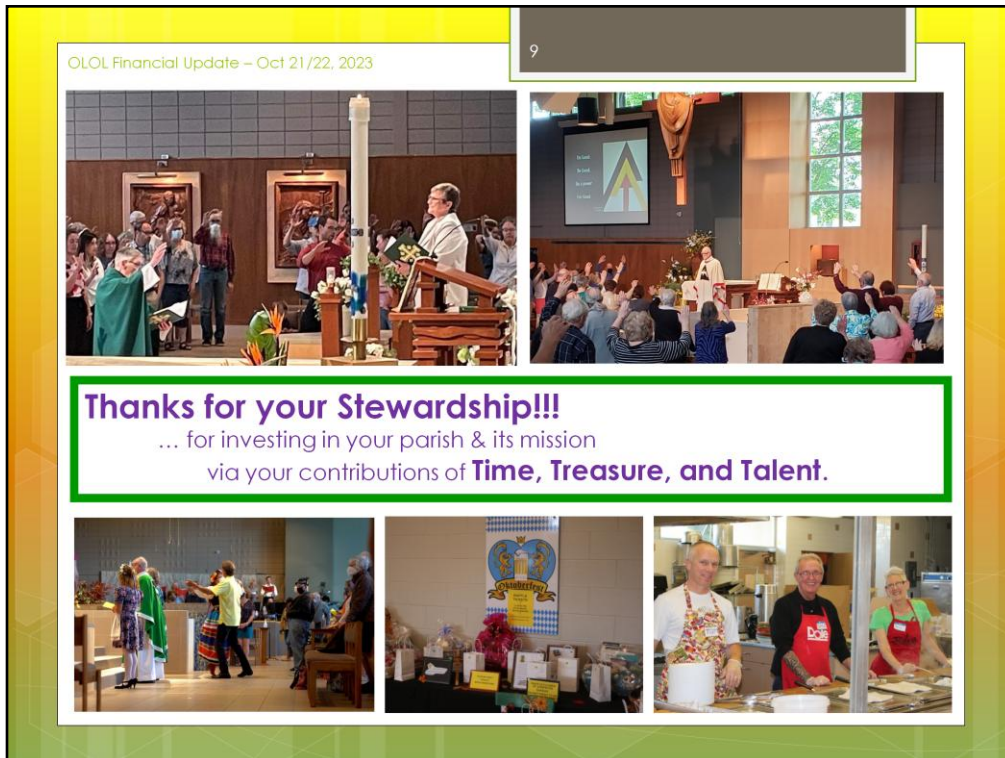
Message:

Lastly for today ... It's time again for our annual Stewardship Pledge campaign.

We ask you to prayerfully begin to consider your planned Operating Fund contributions for 2024. It is these contributions that empower carrying out our daily mission as a parish of disciples.

Mailings will go out Nov 7th and Pledge Commitment weekend will be November 18th & 19th.

Your returned pledges are incredibly important to our Finance Council's ability to accurately budget for the parish's income and expenses. Your pledges tell us if the parish can sustain our current staffing & programs, or can empower growth.



Message:

That's our update for now.

We will again post this presentation on the Finance Council page on the OLOL website. Please access if you'd like.

Thank you again for investing in your parish & its mission via your contributions of Time, Treasure, and Talent.

OLOL is blessed by the commitment & generosity of our parishioners, living & giving as disciples of Christ.

I'll be available after mass, here at the front of the church, to answer any questions, or to take comments that you'd like relayed back to the Finance Council.

Thank you. And, God bless you all.